



30 Myrtle Grove, Newcastle Upon Tyne, NE2 3HT

Offers Over £260,000

Hive Estates presents this exceptional three bedroom flat in the heart of Jesmond, a superb investment opportunity. The property currently generates a strong rental income of £1,885 per month (£22,629 per annum), delivering an impressive yield of 8.70%. Tenanted until August 2027, it offers immediate, secure income with excellent long term growth potential, making it a high performing addition to any portfolio.

Located on Myrtle Grove, the property benefits from a prime position just moments from West Jesmond Metro, as well as Jesmond's vibrant selection of cafés, restaurants, and nightlife.

The accommodation comprises three spacious double bedrooms, each fully furnished with a double bed, wardrobes, drawers, desk, and chair, and finished with comfortable carpeting, perfectly suited to professional or student tenants. The principal bedroom further benefits from a private en-suite, complete with a shower, wash basin, and WC. A separate main bathroom is fitted with a shower over bath, WC, and wash basin, finished in a modern style.

An open plan kitchen and lounge provides a bright, sociable living space, enhanced by patio door leading directly out to a private rear yard.

Additional benefits include on street parking, adding further convenience in this highly sought after location.

Lounge 12'1" x 13'9" (3.70 x 4.20)

Kitchen 8'6" x 8'4" (2.60 x 2.55)

Bedroom 1 7'10" x 14'9" (2.40 x 4.50)

Ensuite 4'11" x 8'2" (1.50 x 2.50)

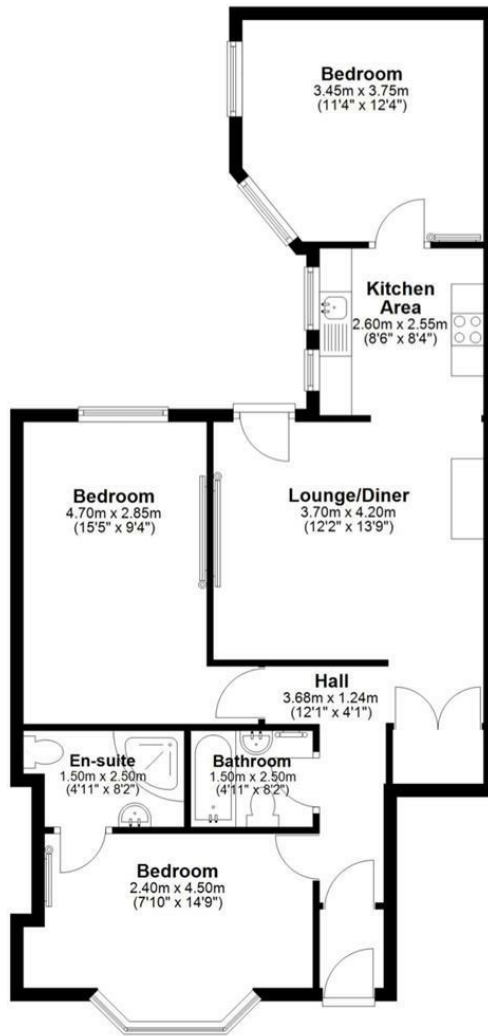
Bedroom 2 15'5" x 9'4" (4.70 x 2.85)

Bedroom 3 11'3" x 12'3" (3.45 x 3.75)

Bathroom 4'11" x 8'2" (1.50 x 2.50)

Floor Plan

Ground Floor
Approx. 78.1 sq. metres (841.2 sq. feet)

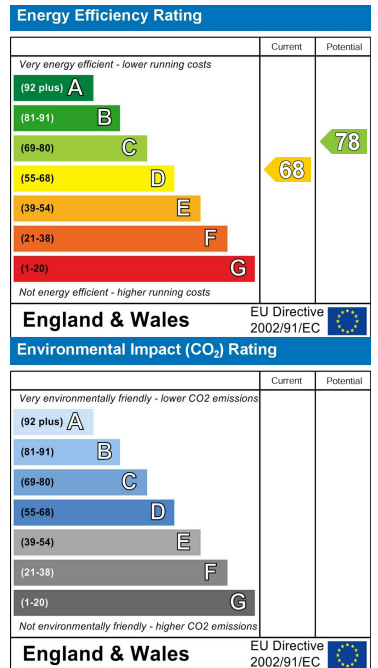


Total area: approx. 78.1 sq. metres (841.2 sq. feet)

Area Map



Energy Efficiency Graph



These particulars, whilst believed to be accurate are set out as a general outline only for guidance and do not constitute any part of an offer or contract. Intending purchasers should not rely on them as statements of representation of fact, but must satisfy themselves by inspection or otherwise as to their accuracy. No person in this firm's employment has the authority to make or give any representation or warranty in respect of the property.